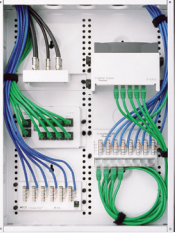


PORTFOLIO EXHIBIT

Visit FinalStepMarketing.com to see more work and find out how we can help your business grow.

[CLICK HERE](#)



STRUCTURED WIRING
Enclosures, Data, Phone, Video



HOME INTERCOM SYSTEMS
Front Door and Multi-Room Intercoms



SURVEILLANCE SOLUTIONS
IP Cameras, Analog Cameras, DVRs and NVRs



ENTERTAINMENT
Whole House Audio, Speakers, IR Repeaters

PRODUCT GUIDE

ABOUT US

Founded in 1993, Channel Vision Technology has evolved into one of the top manufacturers of innovative home systems in the custom electronics industry. Channel Vision has catered to both residential and commercial markets to provide innovative solutions in home automation, surveillance systems, structured wiring, home intercom systems, IR Remote control and audio distribution.

Our broad-range of electronic solutions is designed to provide lifestyle enhancements for residents, while equipping homes and businesses for greater safety, convenience and entertainment.

MARKET 'S SERVED



MDU (Multi - Dwelling Units)

- RF & Video Distribution
- Structured Wiring
- Audio Distribution
- Intercom Systems



Commercial Buildings

- Camera Surveillance
- Audio Distribution
- Structured Wiring



New Home Construction

- RF & Video Distribution
- Audio Distribution
- IR Remote Control
- Structured Wiring
- Intercom Systems
- Camera Surveillance

GET TO KNOW THE CHANNEL VISION ADVANTAGE



Structured Wiring



Surveillance Systems



Home Intercom Systems



Entertainment Systems



IR Solutions2

CHANNEL VISION SERVICES



20 Year Certified Extended Warranty Program

- Includes all passive Structured Wiring in certified installs
- Design, trouble-shoot & certify systems
- Free CEU certification courses
- Efficient installs, higher profits & added value
- Become a Certified Installation Specialist & receive referral leads, marketing support & special promotions



Channel Vision 5 Star Program

- 24/7/365 technical support
- 1/10/20 year warranties
- Free panel design & system layout
- Custom manufacturing
- CEDIA, BISCSI & NBFSA approved trainings with continuing education credit



Builder Advantage Program

- Well-connected home marketing
- Model home and showroom display discounts
- Large selection available with pre-packaged systems

DEALER PROGRAMS



At Channel Vision, we always have our dealers goals mind. All of our dealer programs are designed to make doing business with Channel Vision as simple and profitable as possible.

Channel Vision continues to develop exclusive programs to ensure that our dealers receive the best customer service and support in the industry.



- Enjoy a 30% trade-in discount on next-generation product upgrades
- No time lines to conform to an upgrade
- Product can be working or in non-working condition
- Our entire line of products are eligible (hard-drives excluded)



- Install our technology in a home development and we will discount those products
- Exclusive to authorized Channel Vision dealers
- Year-round discounts on wall plates, connectors & structured wiring products



- Exclusive to authorized Channel Vision dealers
- Demonstration discounts for your showroom



- Channel Vision's technical team will design a custom solution for your project
- We provide a CAD drawing together with a recommended parts list
- Save time, resources and money

GUIDE TO PART NUMBERING

To locate a system by part number, follow this guide to understanding the part numbering system:

Structured Wiring:

Tools & Connectors: **1000-3112**

Surveillance Cameras: **6002-6822**

» Enclosure Double Doors:.....	C-01__DD
» Enclosures:.....	C-01__E
» Hinged Covers:.....	C-01__HC
» Passive Splitters:.....	C-02__
» Amplified RF Splitters:.....	C-03__
» Telephone Distribution:.....	C-04__
» Data Distribution:.....	C-05__
» Fiber Optics.....	C-06__
» Power Distribution:.....	C-07__
» Enclosure Accessories:.....	C-13__
» Analog Modulators:.....	E_____
» Hybrid Splitters:.....	HS____
» Digital Cable Modulation Hubs:.....	P_____
» Taps, Blanks are the number of dB's:.....	TP__dB

Surveillance Cameras:

- » 6002-6822
- » * 65_.....IP Cameras
- » * 68_.....Analog Cameras

Audio:

- » A-Bus Line:.....**AB_____**
- » Aria and Crescendo Line:.....**AO_____**

Speakers:

- » In-ceiling Speakers:.....**IC_____**
- » In-wall Speakers:.....**IW_____**
- » Outdoor Speakers":.....**OS_____**
- » Wireless Audio Distribution:.....**WA_____**
- » Left Center Right Speakers:.....**LCR_____**

IR Remote Control:

- » **IR_____**

Home Intercom Systems:

Part numbering for Channel Vision intercom systems denotes the Series of intercom station, optional camera usage, door station color and PC board.

The following prefixes will depend on the series of intercom you choose:

- » DP
- » IU
- » DS3

The following Character will be a number. Choose your camera option:

- » No Camera:.....**-0_____**
- » Analog Camera:.....**-6_____**
- » IP Camera:.....**-7_____**

Ex: DP-0, DP-6, DP-7

Choose a color:

- » White:.....**212**
- » Polished Brass:.....**222**
- » Antique Brass:.....**232**
- » Chrome:.....**242**
- » Oil Rubbed Bronze:.....**252**
- » Antique Copper:.....**262**
- » Black:.....**282**
- » Satin Nickel:.....**302**

Ex: DP-0212, DP-6212 | IU-6212, IU-6222
DP-0222, DP-6222 | IU-6212, IU-6222

The last number expresses the type of circuit board used in the intercom. This will be dependent on the phone system with which the intercom will be used:

- » There is no letter after the color-the intercom you chose is compatible with Channel Vision Telephone Entry Controllers (P-0920 & P-0921)
- » For use with Panasonic:.....**_____P**
- » For use with CAT5 Intercom Systems:.....**_____C**
- » Amplified audio included in PC Board for use with P-0920 & P-0921:.....**_____A**

STRUCTURED WIRING

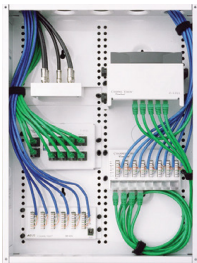
With Channel Vision's Structured Wiring Systems, commercial and residential wiring systems are designed to be transparent and straightforward in order to facilitate upgrades and system modifications in the future

FEATURES AND BENEFITS

- One of the largest selection of structured wiring enclosure on the market
- Simple, snap-in modules for cameras, video, voice, data, power, fiber optics, audio and communication systems.
- Solid steel construction with a pure white-coated finish



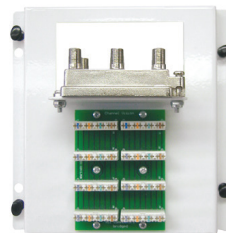
● CORE COMPONENTS



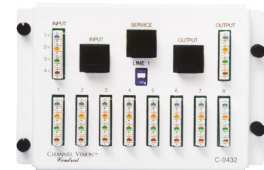
Wiring Enclosures



Data Distribution



Video Distribution



Telephone Distribution

● FREE SYSTEM DESIGN SERVICE



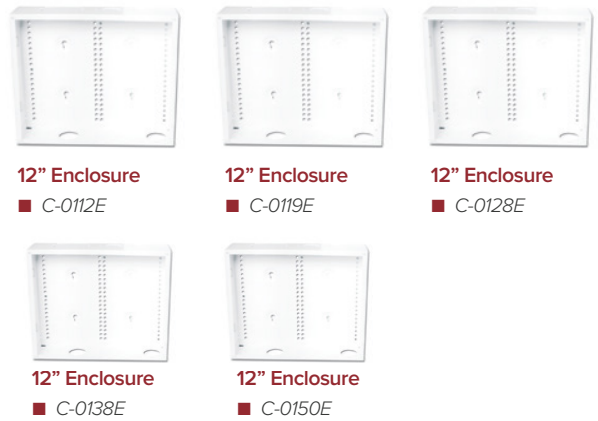
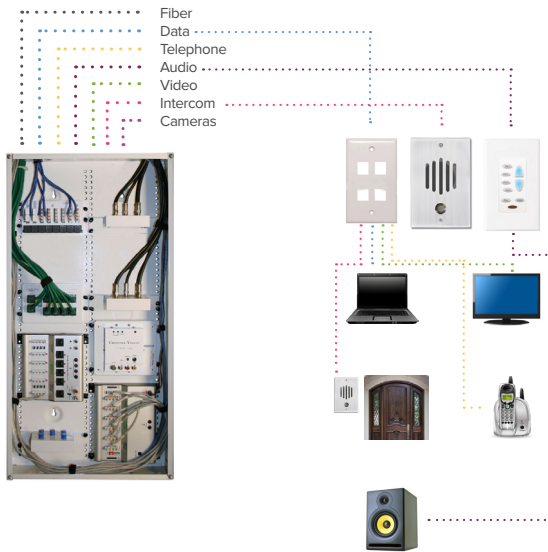
3 Quick and Easy Steps to a Complete System

1. Visit the website at channelvision.com and complete the form
2. We'll send you a complete system design and a list of product needed
3. Submit a list of the products needed to your dealer or distributor

For an authorized dealer or distributor near you, visit channelvision.com or call (800) 840-0288

ENCLOSURES

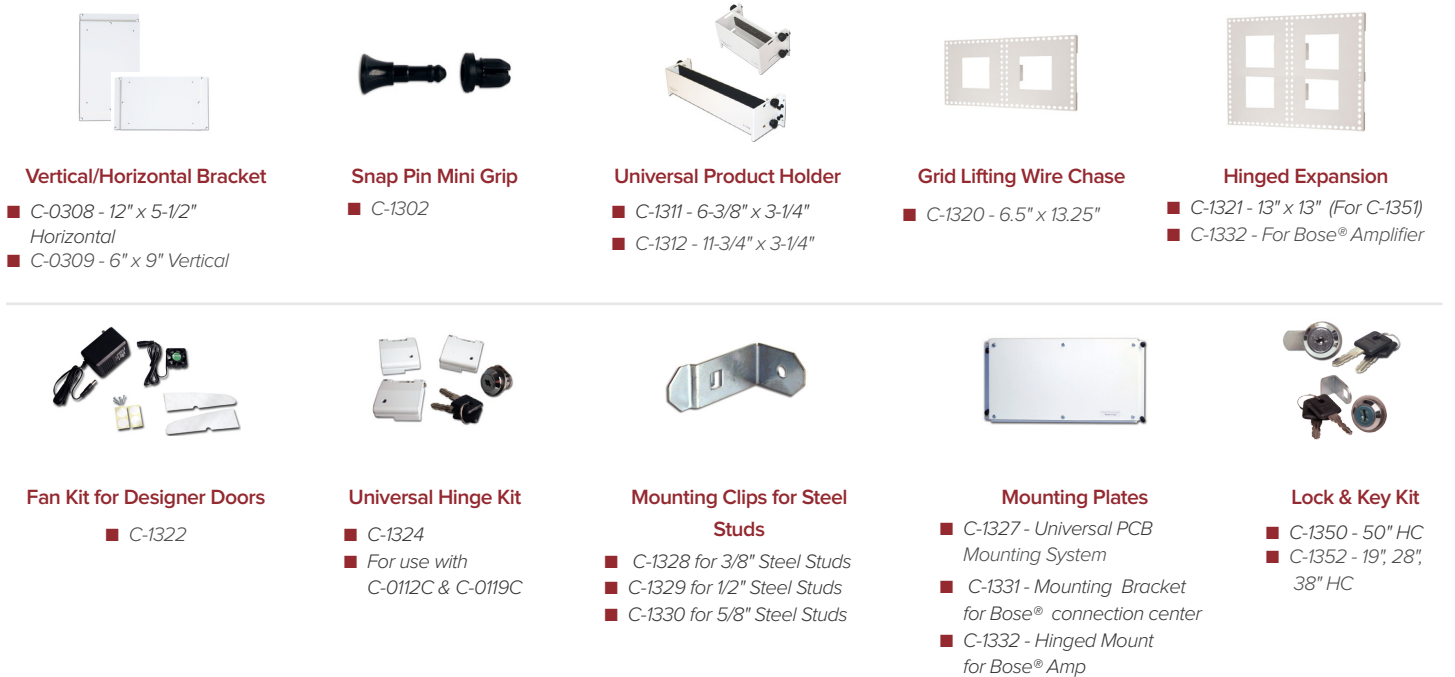
Structured Wiring Enclosures. Solid steel with a pure white powder coated finish.










ENCLOSURE COVERS



ENCLOSURE ACCESSORIES



● **DATA DISTRIBUTION**

 <p>NEW 4x4x4 CAT5 Patch Panel, RF Splitter and Phone Distribution ■ C-0244</p>	 <p>8x8 CAT6 Data Patch Panel ■ C-0538</p>	 <p>4-Port Wireless N Router ■ C-0554</p>	 <p>5-Port Gigabit Switch ■ C-0555</p>
 <p>6x6 CAT5 Data Patch Panel ■ C-0575</p>	 <p>8-Port Gigabit Switch ■ C-0588</p>	 <p>Powerstrip Modules ■ C-0702 - Vertical Plug ■ C-0705 - Horizontal Plug</p>	

● **TELEPHONE DISTRIBUTION MODULES**

 <p>4x8 110 Phone with RJ31X ■ C-0432</p>	 <p>4x8 RJ45 Phone with RJ31X ■ C-0436</p>	 <p>4x12 RJ45 Phone with RJ31X ■ C-0437</p>	 <p>Tele Dist. 4x7 ■ C-0438</p>	 <p>110 Tel. Dist. 4x15 ■ C-0439</p>	
 <p>1x6 Economy RJ45 Phone Distribution ■ C-0476</p>	 <p>1x6 Economy 110 Phone Distribution ■ C-0478</p>	 <p>100 Pair Phone with RJ31X ■ C-0441</p>	 <p>Lightning/Surge Protection ■ C-0410</p>	 <p>DSL Filter Surge Protection with RJ31X ■ P-0411</p>	 <p>RJ31X Module ■ C-1333</p>

● **KSU TELEPHONE DISTRIBUTION**

 <p>KSU Phone Dist. Module ■ C-0434</p>	 <p>Telco to RJ14 Converter ■ C-0497</p>	 <p>KSU Expansion PCB ■ C-0499</p>	 <p>Pre-Wired Octopus Cable ■ C-0498</p>
--	---	--	---

● VIDEO DISTRIBUTION & RF MODULATION



1-Input Micro Modulator E1200

- C-0301 - On Bracket for Enclosure
- 25dBmV output
- Wide channel range cable 65-135 (excluding 95-99) UHF 14-78
- Push button channel selector



2 / 4 Input Modulator E2200IR / E4200IR

- C-0352/C-0354 - On Bracket
- 25dBmV output
- Wide channel range cable 65-135
- (excluding 95-99) UHF 14-78
- Built in IR engine for use with the IR-4101



Affinity 3x8 Amplified Splitter and Modulator Cable Combiner

- P-0328
- Combines cable TV with modulated signals and amplifies up to 8 outputs
- Eliminates cable interference without filters to block channels
- IR engine over coax built-in



75 ft. Amplified Component Cables

- P-1400
- Amplifies component, composite, S-Video for quick legacy product installation
- Pre-connected connectors S-Video, component, composite, IR 3.5mm



1-Input MTS Stereo

- CVT1Stereo-II
- 1-Input, table-top design, stereo audio
- Full 30+dBmV output (adjustable)
- LED Channel Display
- Video level adjustment



Audio/Video Baseband Distribution

- VDA-12
- 1 in 12 out
- High power output drive stage
- 500 lines resolution
- Video gain adjustable

● RF MODULATION WITH IR CONTROL



2x1 RF Combiner with IR Controlled Switch

- P-0321
- Source switching between cable and modulator (or Antenna)
- IR engine over coax built-in



Affinity 3x8 Amplified Splitter and Modulator Cable Combiner

- P-0328
- Combines cable TV with modulated signals and amplifies up to 8 outputs
- Eliminates cable interference without filters to block channels
- IR engine over coax built-in



1-Input MTS Stereo

- CVT1Stereo-II
- 1-Input, table-top design, stereo audio
- Full 30+dBmV output (adjustable)
- LED Channel Display
- Video level adjustment



Audio/Video Baseband Distribution

- VDA-12
- 1 in 12 out
- High power output drive stage
- 500 lines resolution
- Video gain adjustable



Affinity Mini Remote

- A0511



75 ft. Amplified Component Cables

- P-1400
- Amplifies component, composite, S-Video for quick legacy product installation
- Pre-connected connectors S-Video, component, composite, IR 3.5mm



- C-1201

RF Modulation	RF Modulators	P-0321 2x1 RF Combiner with IR Controlled Switch	P-0328 Amplified Splitter and Modulator Cable Combiner
How many Sources do you want to modulate?	1, 2, 3 or 4 Sources	Cable Combiner- 1 TV	Amplifies up to 8 Outputs
How many locations want to see the modulated feed?	4 sources input of RCA or CAT5	All Modulation or all TV	Independent room control

● WALL PLATES

STANDARD IVORY



STANDARD ALMOND



STANDARD WHITE



DECORATOR IVORY w/ICONS



DECORATOR ALMOND w/ICONS



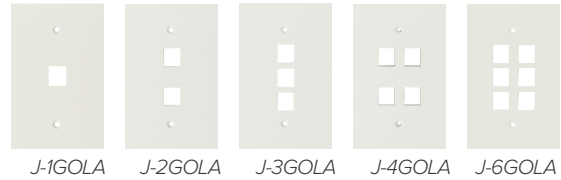
DECORATOR LIGHT ALMOND w/ICONS



DECORATOR WHITE w/ICONS



OVERSIZE LIGHT ALMOND



OVERSIZE WHITE



Snap-On Icon Labels included with Decorator Wallplates.



- IR Breakout Insert**
- G-IRB-W
 - J-IRB-I
 - J-IRB-A



F Connector
2002



F and Telephone
2009



Cable Port
G-1CDW



7.2 Home Theater
CC-272



7.2 Home Theater w/Inserts
CC-372

● WALLPLATE INSERTS & CONNECTORS



- Black Banana Jack**
- G-BJB-W (White)
 - J-BJB-A (Almond)
 - J-BJB-I (Ivory)



- Red Banana Jack**
- G-BJR-W (White)
 - J-BJR-A (Almond)
 - J-BJR-I (Ivory)



- Banana Plug**
- J-BPB (Gold Plated Black)
 - J-BPR (Gold Plated Red)



- F to RCA**
- G-IF/RCAW (White)
 - J-IF/RCAA (Almond)
 - J-IF/RCAI (Ivory)



- RCA to RCA G-IRCA-W (White)
- J-IRCA-A (Almond)
 - J-IRCA-I (Ivory)



- BNC to BNC**
- G-IBNC-W (White)
 - J-IBNC-A (Almond)
 - J-IBNC-I (Ivory)



- 6P4C, RJ-14, 110**
- G-C3AW (White)
 - J-C3AA (Almond)
 - J-C3AI (Ivory)
 - J-C3ALA (Light Almond)



- CAT5, 8P8C, 110**
- G-C5AW (White)
 - J-C5AI (Ivory)
 - J-C5AA (Almond)
 - J-C5AB (Blue)
 - J-C5ALA (Light Almond)



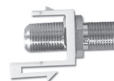
- CAT6, 8P8C**
- G-C6AW (White)
 - G-C6AR (Red)
 - G-C6AB (Blue)
 - G-C6AY (Yellow)
 - G-C6AG (Green)



- C5 Connector**
- J-101-88



- RJ14 6P6C Round Wire**
- J-66-C3



- F to F Connector**
- G-IFCW (White)
 - J-IFCA (Almond)
 - J-IFCI (Ivory)
 - J-IFCLA (Light Almond)



- Blank Insert**
- G-I-B-W (White)
 - J-I-B-A (Almond)
 - J-I-B-I (Ivory)
 - J-I-B-LT (Light Almond)



- C5 Shielded Connector**
- J-101-8S-C6

● AMPLIFIER



- Return Path Amplifier**
- C-0300



- Cable TV Amplifier 40dB**
- C-0340



- 40dB RF Amplifier**
- CVT-40BID



- 1 in 1 Out 15dB
Multimedia Amplifier**
- CVT-15WB



- Line Tap**
- TP6dB
 - TP16dB
 - TP24dB
 - TP12dB
 - TP20dB

● SPLITTERS



- RF 1GHz Splitter**
- C-0202 - 2 Way
 - C-0204 - 4 Way
 - C-0208 - 8 Way
 - C-0332 - 16 Way



- RF Splitters**
- HS-2 - 2 Way
 - HS-3 - 3 Way
 - HS-4 - 4 Way
 - HS-6 - 6 Way
 - HS-8 - 8 Way
 - HS-16 - 16 Way



- 1x16 Amplified Splitter Module**
- C-0332



- 8 Out Bi-Directional Amplified Splitter**
- C-0333



- 2x8 Multimedia Amplified Splitter / Combiner**
- CVT-2/8WB



- 8-way RF splitter**
- C-0238
 - 2GHz rated for high bandwidth pass-through
 - Vertical F-connectors for easy connection

COMBO MODULES



- C-0214 - 1x6 RJ45 / 1x4 Coax
- C-0216 - 1x6 Phone / 1x4 Coax



- Home Office Module 4x4**
- RJ45 / 1x2 Coax C-0215



- 1x15 Phone & 1x4 Video Module**
- C-0219



- 1x7 Phone & 8 TV Distribution**
- C-0227



- Basic Structured Wiring System**
- C-0221

ACCESSORIES



- Fiber Optics Spool Module**
- C-0622



- Speaker Distribution Module**
- C-1001

● CONNECTORS



F Connector Tool
■ 1003



RG59 Crimp F-Connector
■ 2103



RG6 Interconnect
■ 2131 Q11 - 11"
■ 2131 Q17 - 17"
■ 2131 Q24 - 24"



Push & Seal F Connector
■ 2133 - Black
■ 2134 - Quad Blue



HQ F-Connector with Gold Center Pin
■ 2140 HQ
■ 2141 HQ - Solderless Cable



Dual F-Connect Ground Block
■ 2202



"Y" Connector for Splitting Audio & Video
■ 3104 HQ (Gold Plated)



RG6 Crimp F-Connector
■ 2104 - Corrugated
■ 2104C - Compression
■ 2104QS - Quad Shield



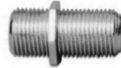
F Connector Right Angle
■ 2125



F-Connect Ground Block
■ 2201



F-Male Terminator 75 ohm
■ 2101



Double Female F-Splice
■ 2102



F-Female to BNC Male
■ 2105



RG59 BNC Twist On
■ 2106



BNC Three Female
■ 2107



BNC Double Female
■ 2108



BNC 75ohm Terminator
■ 2109



BNC Male Twist on for RG6
■ 2110



BNC Crimp on for RG6
■ 2113



BNC Crimp on for RG59
■ 2114



F to UHF Adaptor
■ 2115



BNC Crimp 3-Piece
■ 2116



BNC Crimp On RG59 Female
■ 2117



BNC Female 2 Piece Plenum
■ 2118



BNC Male 2 Piece Plenum
■ 2119



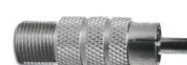
BNC "T" 2 Female, 1 Male
■ 2120



BNC Ferrule for RG6
■ 2122



BNC Right Angle
■ 2123



F Female to RCA Male
■ 2126



RCA Female to BNC Male
■ 2127



BNC Female to RCA Male
■ 2129



RG6 Interconnect
■ 2131 Q11 - 11"
■ 2131 Q17 - 17"
■ 2131 Q24 - 24"



Female 2.1mm Power Supply Adapter
■ 2143F



Male 2.1mm Power Supply Adapter
■ 2144M



Cable Box Combiner
■ 3101



Low Pass Filter Blocks Below Channel 60
■ 3102-60



RCA Y Compensator 1kΩ
■ 3107



DC Block
■ 3109



Tilt Compensator
■ 3110-TILT



CAT5 Balun
■ 3112



CAT5 RJ45 Interconnect
■ C-0408 - 1'
■ C-0409 - 3'

● TOOLS



Crimp Tool for RG59, 58, 6
■ 1011



110 Punch & Strip Tool
■ J-110-TOOL



Quad Crimp RG6
■ 1012



Crimp Tool CAT5
■ 1014



F Tool - Snap & Seal (2133 & 2134 Only)
■ 1015



Coax Cutter Tool
■ 1016



Punch Down Tool - 110
■ 1017



RG6 Cable Clip with Nail
■ 1115- Black
■ 1116- White

SURVEILLANCE SOLUTIONS

Channel Vision's surveillance systems offer a range of solutions to meet the security needs of both residential and commercial surveillance.

FEATURES AND BENEFITS

- Monitor your surveillance Cameras from anywhere in the world using an internet browser or Channel Vision's Smartphone application.
- Surveillance cameras can be viewed in real-time with superior image quality and IR LEDs for night viewing.



● CORE COMPONENTS



IP CAMERAS



ANALOG CAMERAS



DIGITAL VIDEO RECORDER



NETWORK VIDEO RECORDER

● INTEGRATION OPTIONS

CHANNEL VISION'S IP CAMERAS ARE BATTLE TESTED WITH:



● SURVEILLANCE RECORDING



HE Series DVRs

- DVR-4HE / DVR-8HE / DVR-16HE
- Windows and Mac compatible
- Supports up to 960H High resolution cameras
- Smart Search and Playback features
- Mobile monitoring with your Smartphone, laptop or tablet through the Channel Vision app



Network Video Recorders

- NVR-4
- 4 IP camera audio and video recorder
- Access from monitor, internet or smartphone
- Supports PPPoE, Static, DHCP IP and DDNS
- ONVIF cameras support

● SURVEILLANCE KITS



Hidden DVR Kit

- DVR-4HEKIT1
- 4 Channel DVR in Enclosure with 500GB Drive
- IR Repeating System included



Camera & DVR Kit

- DVR-4HEKIT2
- 4 Channel DVR with 500GB Drive
- 4 Outdoor 6333-0 Bullet Cameras



Camera & DVR Kit

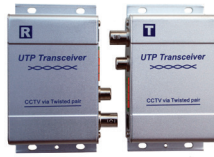
- DVR-4HEKIT3
- 4 Channel DVR with 500GB Drive
- 4 Outdoor 6822-W Cameras

● BALUNS



IP Camera Balun Over Coax Converter Kit

- B-204
- Uses legacy analog video cabling RG-59 or RG-6
- IP camera over 300ft cable runs
- Transmitter and receiver included



Amplified Balun Kit

- B-321
- Sends analog video 7,000 ft. on CAT5
- 2 Power supplies included



CAT5 Camera Sequencer

- P-6014
- 4 camera switcher
- CAT5 balun input
- RS232 Control



1 Camera CAT5 Passive Video Balun

- B-201
- Sends video 1,000ft. on twisted pair



CAT5 Camera Balun for Camera, Audio & Power

- B-300
- Includes both transmit and receive units
- Sends video, power and audio 1,000ft. on CAT5



CAT5 Balun Audio, Video & Power Interface

- 3112
- Converts any standard camera to CAT5 cable
- Works with the P-6014 CAT5 Camera Sequencer

● SURVEILLANCE ACCESSORIES



Camera Swivel Mount

■ 5030



Wall Mount for 6106, 6126, 6127 and 6901 Dome

■ 5034



Wall Mount for 6810

■ 5038



Junction Box for 6543

■ 5039



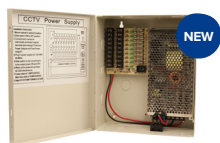
IR Illuminator 33ft.

■ 5040



Wallmount for 6564

■ 5042



9 Camera Power Supply

■ 5011



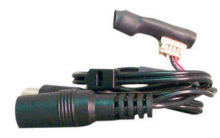
18 Camera Power Supply

■ 5012



Camera Power Supply

- 5015PS - 500mA
- 5017PS - 1000mA



Camera Microphone

■ 5104-MIC

● Indoor IP Cameras

CAMERA	SKU	INDOOR/ OUTDOOR	RESOLUTION	LUX VALUE	LENS	ADDITIONAL INFORMATION
 NEW	6535	Indoor	2 Megapixel	LUX: Color—0.1 LUX / Black & White—0.5 LUX	Fixed Lens 2.8 mm	Indoor Mini Dome IP Camera

● Outdoor IP Cameras

CAMERA	SKU	INDOOR/ OUTDOOR	RESOLUTION	LUX VALUE	LENS	ADDITIONAL INFORMATION
 NEW	6525 - B / 6525 W	Outdoor	2 Megapixel	LUX: Color-0.1 LUX (AGC On)	Fixed Lens 2.8 mm	Flush Mount IP Camera
	6533	Outdoor	2 Megapixel	LUX: COLOR-0.1 LUX (AGC On)	Fixed Lens 2.8 mm	1080P 2 MP Mini Dome IP Camera with POE, 6 IR LEDs & 2-Way audio, Vandal Proof dome
 NEW	6565	Outdoor	2 Megapixel	LUX: 0.01 LUX (IR On)	3-10.5 mm Varifocal Lens	Dome IP Camera
	6544	Outdoor	1.3 Megapixel	1.0 Lux @30fps (IR Off) 0 Lux @30fps (IR On)	3.3-10 mm Varifocal Lens	Outdoor IP Bullet Camera with Smart IR





● Bullet Analog Cameras

CAMERA	SKU	INDOOR/ OUTDOOR	RESOLUTION	LUX VALUE	LENS	ADDITIONAL INFORMATION
 NEW	6333-0	Outdoor	800 TVL	0 LUX (IR On)	2.8 MM-12 MM Varifocal Lens	960H Bullet Camera 42 IR LEDs up to 45 feet viewing, 12vDC

● Dome Analog Cameras

CAMERA	SKU	INDOOR/ OUTDOOR	RESOLUTION	LUX VALUE	LENS	ADDITIONAL INFORMATION
	6822-0 / 6822w	Outdoor	800 TVL	0 LUX (IR On)	2.8 mm-12 mm Varifocal	960H Varifocal Eyeball Dome Camera Available in Oil Rubbed Bronze or White, Vandal Proof, IP66 Weatherproof Rating

● Specialty Analog Cameras

CAMERA	SKU	INDOOR/ OUTDOOR	RESOLUTION	LUX VALUE	LENS	ADDITIONAL INFORMATION
	6404	Indoor	560TVL	0.1 Lux	Fixed 5.5mm	5.5mm lens for tight viewing angles WDR (Wide Dynamic Range)
	6405	Outdoor	700 TVL of resolution	0 LUX (IR On)	Pinhole 3.7mm P1	High-Resolution mini pinhole camera mounted inconspicuously inside a smoke detector enclosure WDR (Wide Dynamic Range)
	6406	Outdoor	700 TV Lines of resolution	0 LUX (IR On)	3.7 mm P1 lens	High-resolution mini pinhole camera mounted inconspicuously inside a motion detector enclosure 960H High Resolution Sony Super HAD CCD Sensor II WDR (Wide Dynamic Range)
	6722	Outdoor	800 TVL	0 LUX (IR On)	2.8 mm-12 mm Varifocal	960H Varifocal Eyeball Dome Camera

HOME INTERCOM DOOR STATIONS

Channel Vision's Home Intercom Systems provide room-to-room communication and front door entry control with the push of a button. With a variety of features and companion products offered within the line, Channel Vision offers a complete solution for whole-house communication and security.

● CORE COMPONENTS

- Front Door Intercom
- Room - to - Room Intercom
- Front Door - to - Mobile Phone



FEATURES AND BENEFITS

- High quality door stations made from 1/4" solid brass providing a luxurious addition to any front door or access point.
- Enjoy 2-way communication between front door intercom and every telephone in the house
- Add a camera to see who approaches your front door
- Connect to your front door from your mobile phone with Channel Vision Companion systems

● INTERCOM SYSTEM MODEL NUMBERS

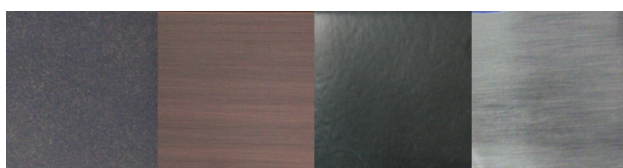
- | | |
|--|--|
| <ul style="list-style-type: none"> • DP • IU • DS3 | <ul style="list-style-type: none"> • DP-style faceplate - Large • IU-style faceplate - Single Gang • DS-style faceplate - Three Gang |
| <ul style="list-style-type: none"> • 0 • 6 | <ul style="list-style-type: none"> • No camera • Color Camera |
| <ul style="list-style-type: none"> • 212 • 222 • 232 • 242 • 252 • 262 • 282 • 302 | <ul style="list-style-type: none"> • White* • Polished Brass • Antique Brass • Chrome* • Oil Rubbed Bronze • Antique Copper* • Black* • Satin Nickel |

DP-0212P

- Blank
 - P
 - C
 - A
- P-0920/P-0921 compatible
 - Panasonic compatible
 - CAT5 Intercom compatible
 - Amplified Audio w/P-0920/P-0921

*P-0920/P-0921 Amplified audio requires 4 conductor wires

● DOOR STATION FINISHES

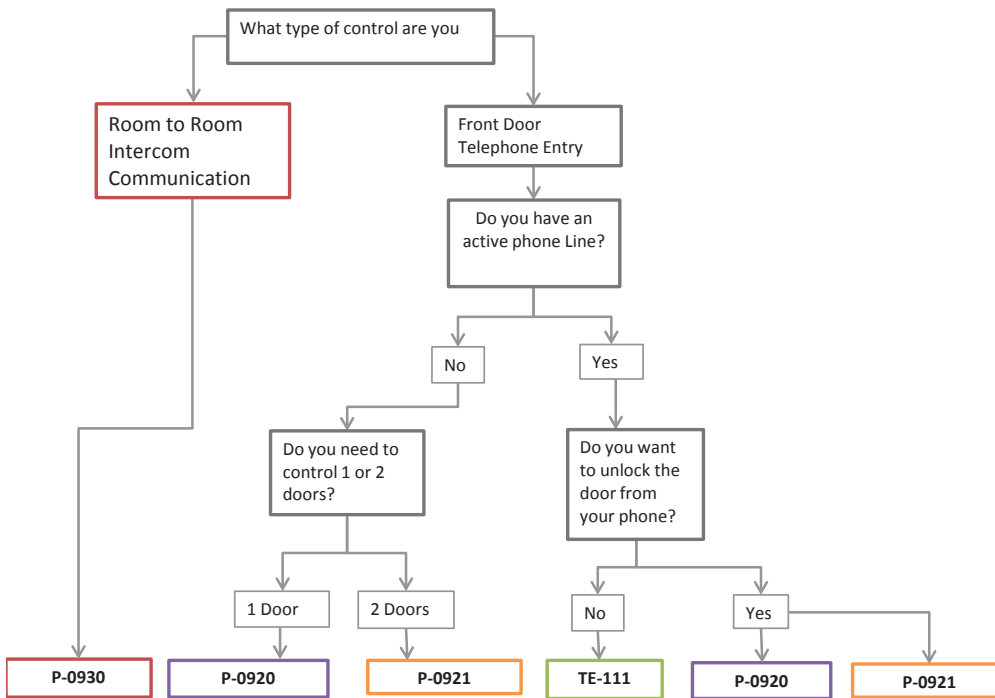








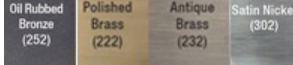

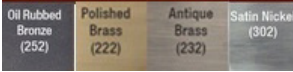
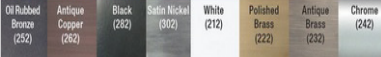


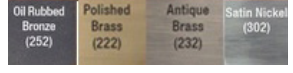

Oil Rubbed Bronze (252) Antique Copper (262) Black (282) Satin Nickel (302)





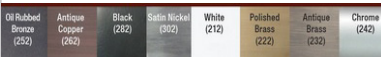


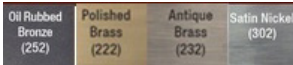

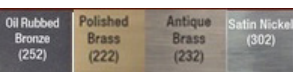




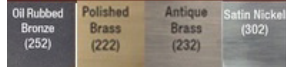


White (212) Polished Brass (222) Antique Brass (232) Chrome (242)




● CHOOSE A HOME INTERCOM SOLUTION



Channel Vision Standard Controller P-0920 & P-0921	Features	Finishes	Circuit Board	Flush Mount	Surface Op
DP Series 	2-way Comm. with Front Door Amplified Communication		S : Standard PC Board A: Amplified PC Board	DP-Rbox-III 	DP-900 DP-900
IU Series 	2-way Comm. with Front Door Amplified Communication		S : Standard PC Board A: Amplified PC Board I: IP Camera & 2-way communication	Flush Mount single gang box included 	No Surface Options IU Series
DS3 Series 	2-way Comm. with Front Door Amplifier Includes an IP camera and enhanced communication with door station		S : Standard PC Board A: Amplified PC Board	Mud Ring included	
SI Series 	2-way Comm. with Front Door Amplified Communication		S : Standard PC Board A: Amplified PC Board I: IP camera & way communication PC Board	Flush Mount, single gang box included	
SI-7000 Series	2-way Comm. with Front Door Amplified Communication Includes an IP camera and enhanced communication with door station		S : Standard PC Board A: Amplified PC Board I: IP camera & 2-way communication PC Board	Flush Mount, single gang box included 	
SIK Series 	2-way Comm. with Front Door Amplified Communication Includes an IP camera and enhanced communication with door station			Back box included 	

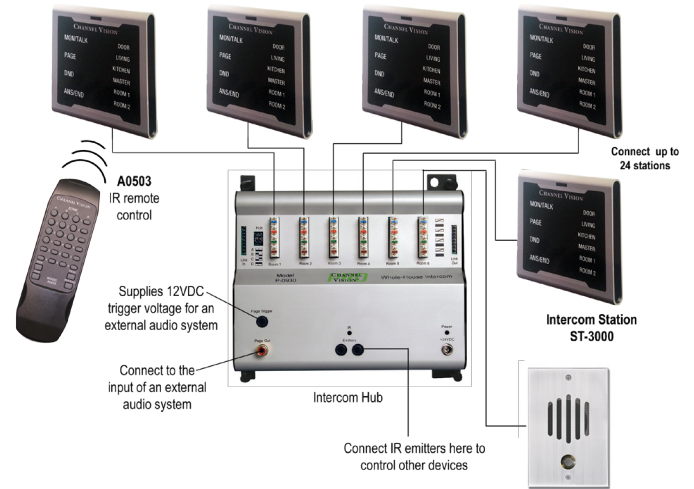
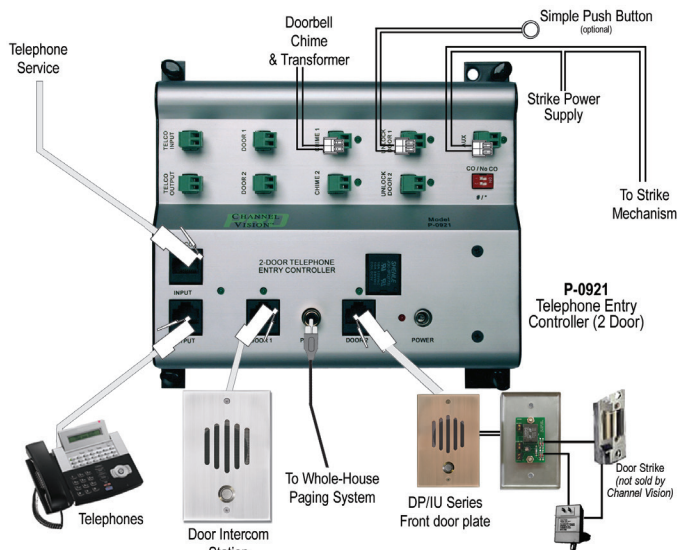
Panasonic KSU Phone System	Features	Finishes	Circuit Board	Flush Mount	Surface Op
DP Series 	2-way communication & compatible with Panasonic KSU phone Systems		P: Panasonic KSU Circuit Board	DP-Rbox-III 	DP-900 Includes DP-900
IU Series 	2-way communication & compatible with Panasonic KSU phone Systems		P: Panasonic KSU Circuit Board	Flush Mount single gang box included 	No Opt Surface
DS3 Series 	2-way communication & compatible with Panasonic KSU phone Systems Includes an IP camera and enhanced communication with door station		P: Panasonic KSU Circuit Board I: IP camera & 2-way communication	Mud Ring included	No Opt Surface
SI Series 	2-way communication & compatible with Panasonic KSU phone Systems		P: Panasonic KSU Circuit Board	Flush Mount, single gang box included 	No Opt Surface
SI-7000 Series	2-way communication & compatible with Panasonic KSU phone Systems Includes an IP camera and enhanced communication with door station		P: Panasonic KSU Circuit Board I: IP camera & 2-way communication	Flush Mount, single gang box included 	No Opt Surface
SIK Series 	2-way communication & compatible with Panasonic KSU phone Systems Includes an IP camera and enhanced communication with door station		P: Panasonic KSU Circuit Board I: IP camera & 2-way communication	Back box included	No Opt Surface

Surface Mount	Option for a Keypad?
1 (Black) 2 (White)	No
Surface Mount Options for the Systems	No
	Yes--Keypad Included
	No
	No
	"Yes--Keypad Options: SB-Single Door Black Keypad SN-Single Door, Satin Nickel Keypad WB-26-Bit, Black Wiegand Keypad WN-26-Bit, Satin Nickel Wiegand Keypad "

CAT5 Intercom System P-0930	Circuit Board	Features	Flush Mount Options	Surface Mount Options
ST-3000	C: CAT5 PC Board 	Room-to-room communication, proxy sensor lights up keypad when near screen, and fits into standard 2 gang box (not included)	Standard 2 gang Box	No Option for Surface Mount
4-Room Intercom Communication Kit ST-0935	C: CAT5 PC Board 	Includes: 4 Interior Stations (ST-3000) 1 Remote (A0503) 1 Home Intercom Hub (P-0930)	Standard 2 gang Box	No Option for Surface Mount
4 + Room Intercom Communication: Combine the ST-0935 with the ST-3000 or another ST-0935	C: CAT5 PC Board 	Up to 24 Internal room-to-room Communication	Standard 2 gang Box	No Option for Surface Mount

Surface Mount Options	Option for a Keypad?
1 (Black) 2 (White)	No
Option for Surface Mount	No
Option for Surface Mount	Yes--Keypad Included
Option for Surface Mount	No
Option for Surface Mount	No
Option for Surface Mount	Yes--Keypad Options: SB-Single Door Black Keypad SN-Single Door, Satin Nickel Keypad WB-26-Bit, Black Wiegand Keypad WN-26-Bit, Satin Nickel Wiegand Keypad

● APPLICATION



Single Door Telephone Entry Controller

■ P-0920 as 1 Door Telephone Entry

The P-0920 provides communication between the front door intercom and any phone in the house. Install the P-0922 with this controller to forward intercom communication to your cell phone or an alternative landline.

- Built-in Door Strike Relay
- Doorbell Chime Output
- Paging through audio system
- Automatic triggering relay

Door Telephone Entry Controller

■ P-0920 as 1 Door Telephone Entry

The P-0921 telephone entry controller allows communication between two different Channel Vision door intercoms and any phone in the house. This system can also be used with the P-0922 Mobile Intercom Connect to forward intercom communication to your cell phone or an alternative landline.

- Up to 2 doors and 22 stations
- IR remote control of room stations
- Modes - Monitor, DND, and privacy
- Hands-free communication
- Paging through the whole-house, specific room or audio system
- Single CAT5 wire to each station
- Paging through audio system
- Automatic triggering relay

Room-to-Room Intercom Controller

■ P-0921 2 Door Telephone Entry Control

The P-0930 provides communication between any intercom Station in the house. The controller is for use with the ST-2000 or the ST-3000 intercom stations, and allows you to connect up to 20 different stations.

- IR remote control of room stations
- Modes - Monitor, DND, and privacy
- Hands-free communication
- Paging through the whole-house, specific room or audio system
- Single CAT5 wire to each station

FRONT DOOR STATIONS



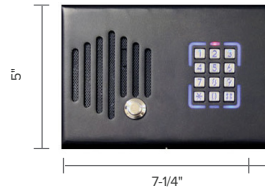
DP Series Intercom

- 1/4" Solid Brass
- Available in 8 different finishes
- Surface mount box included
- Flush mount use DP-RBoxIII



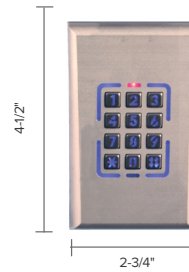
IU Series Intercom

- 1/4" Solid Brass
- Hidden camera option available
- Fits into a single gang box (included)



DS3 Series Intercom

- 8 code memory
- Tamper resistant
- Built-in relay
- Fits into 3 gang box (not included)



DS-Keypad Access Control

- 8 code access control
- N/O and N/C relay
- Stainless steel face plate



SIK intercom

- 2 MP IP Camera
- 26-Bit Wiegand or Single Door Keypad
- Illuminated Button



SI intercom

- Discrete Microphone & Speaker
- Illuminated Button

FRONT DOOR STATIONS ACCESSORIES



DP Series Flush Mount Box

- DP-Rbox-III
- Compatible with all DP Front Door Intercom Stations



DP Series Surface Mount Box

- DP-9001 Black / DP-9002 White
- Compatible with all DP Front Door Intercom Stations



Intercom Amplifier Kit

- TE-AMP
- On-site upgrade for existing DP and IU Series Front Door Intercoms
- P-0920 or P-0921 intercoms

FRONT DOOR INTERCOM CONTROLLERS



1-Door Telephone Intercom Controller

■ P-0920

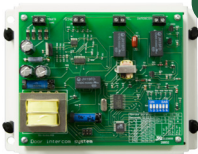
- Provides 2-way conversation between front door intercom speaker and every telephone in the house. Simply pick up the phone to begin speaking to the visitor
- Gate strike relay use TE-110DS



2-Door Telephone Intercom Controller

■ P-0921

- Provides 2-way conversation between two door intercoms and every telephone in the house.
- Two distinctive ring tones when door station is pushed
- Paging through speaker systems



NEW

Economy Front Door Intercom Controller

■ TE-111

- Provides 2-way conversation between front door intercom speaker and every telephone in the house.
- Active phone line required



Door Strike Relay

■ TE-110DS

- For use with Channel Vision's P-0920, P-0921 or TE-111
- Mounts in a single gang electrical box (not included)
- 12VDC, normally open circuit only

FRONT DOOR INTERCOM KITS AND ACCESSORIES



Front Door Intercom Kit

■ TE-0212 (White) / TE-0282 (Black)

Kit Includes:

- Front Door Intercom
- P-0920 Intercom Controller



Home Intercom Paging Module

■ P-0925

- Channel Vision's Paging Module allows the P-0920/P-0921 to provide an audio output that may be connected to the paging input of the whole house amplifier.



Cell Phone Forwarding Module

■ P-0922

- Forwards front door communication to your cell phone
- Activate Door Strike through your cell phone
- Compatible with the P-0920/P-0921



NEW

Front Door Intercom Kit

■ TE-0252

TE-0252 Kit Includes:

- IU-0252 Oil Rubbed Bronze Front
- Door Intercom
- TE-111 Intercom Controller

● ROOM - TO - ROOM INTERCOM SYSTEM



Intercom Station

■ ST-3000

The Room Intercom Station enables communication directly between rooms, the front door or the entire house.

- Rooms with customized names
- Proxy sensor lights up keypad when near screen
- Hands free communication
- Fits into standard 2 gang box (not included)



Home Intercom System CAT5e Hub

■ P-0930

- The Channel Vision Home Intercom System consists of two basic components: P-0930 Intercom CAT5e Hub and ST-3000 Intercom Station. The system can be expanded through the use of additional Home Intercom System CAT5e Hubs and up to 24 home intercom stations.

● ROOM - TO - ROOM INTERCOM SYSTEM KIT



Home Intercom System Kit

■ ST-0935

Channel Vision's Home Intercom System Kit provides direct room-to-room communication and a variety of features not offered by other systems – including a remote control for hands-free calls making whole-house communication from anywhere in the room a snap! The P-0930 Home Intercom Hub can easily be mounted in our structured wiring enclosure and connects to all Home Intercom Stations and Front Door Intercom units with a CAT5e connection. The number of rooms you can communicate with is expandable up to twenty-four (24) intercom stations.

Includes:

- 4 Interior Stations (ST-3000)
- 1 Remote (A0503)
- 1 Home Intercom Hub (P-0930)

● INTERCOM SYSTEM ACCESSORIES



Outbound Call Forwarding Module

■ P-0933

- Answer the door from any remote phone number
- Activate the door strike from your cell phone
- Program up to 3 outgoing phone numbers
- For use with P-0930 hub



Home Intercom Station Expander

■ ST-3100

- Attaches to ST-3000 when expanding the home intercom system
- Provides direct call buttons for 6 additional rooms
- Up to 3 ST-3100 Expanders can be used with 1 ST-3000 (for a total of 24 Stations)



Intercom System Remote Control

■ A0503

- Master remote for Channel Vision's home intercom system. Easily controls your home intercom system.
- No programming necessary
- Compatible with: P-0930, ST-2000 and ST-3000



Home Intercom Door Strike Module

■ ST-C5IDS

The ST-C5IDS is a relay module that provides a contact closure whenever it is activated by the ST-3000 Intercom Station. The contact closure can be used to activate an electronic door strike mechanism or gate opener. This allows the homeowner to answer the door from any intercom station in the house and provide the ability to unlock the door or gate with the press of a button.

- Compatible with ST-2000 & ST-3000 Home Intercom Stations
- Relay settings for N.O. and N.C. Operation
- Variable relay times

AUDIO

Crank up the volume! ARIA multi-room audio distribution delivers powerful room amplification. Combine it with our audio/video matrix for complete control of the system from any room. Channel Vision's ARIA speakers include a full line of in-ceiling, in-wall, outdoor and a full line of builder series speakers - all finely crafted to provide high quality sound throughout the Well-Connected Home™.

FEATURES AND BENEFITS

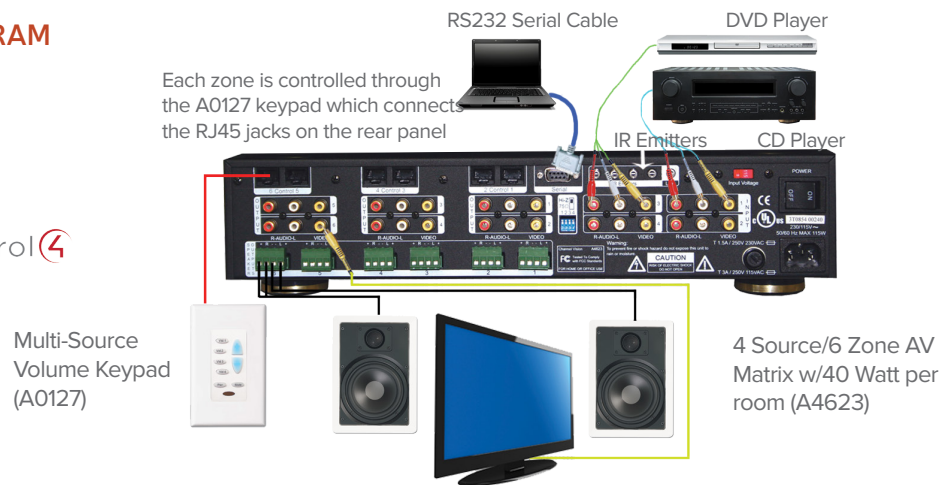
- Up to four different sources can be played in 16 different zones simultaneously
- On-wall iPod docks over CAT5 allow you to listen, charge and control your iPod music and video from any room in your home or business
- In-ceiling, in-wall and outdoor speakers feature high power handling capability providing true stereo sound quality, not simply background music
- IR Repeater Systems provide single room and multi-room control over existing TV coax or CAT5 wire



• ARIA™ WIRING DIAGRAM

- 4 AV sources to 6 zones
- Expands to 18 zones with 3 units
- All inclusive matrix and amplifier system
- Drivers available for:

BitWise controls CasaTunes™ where multi-room audio and the pc meet Control4



Audio Systems	How many Zones?	How many Sources?	Existing Wiring in Place	Volume Control	Optional Features
A-Bus	1-4 zones, expandable to 16	1-4 sources	CAT5 wiring to keypad 16/2 to speakers	Background Music: 15 Watts	Local Source Wall Docks: AB-315 or A0314D Bluetooth Wall Dock: AB-318
Crescendo	1-4 zones, expandable to 16	1-4 sources	CAT5 wiring to AMP/ keypad 16/2 to speakers	Loud: 80-100 Watts	Local Source Wall Docks: A0315 or A0314D Bluetooth Wall Docks: A0318 or A0320
Aria	1-6 zones, expandable to 18	1-4 sources	CAT5 & 16/2 home-runs	Max. Volume: 40-120 Watts	Wall Docks: A0316 or A0314D Bluetooth Wall Docks: A0318 or A0320

• ARIA™ AUDIO DISTRIBUTION



ARIA™ Multi-Zone Audio Amplifier

- A1260 / A1260R
- 12-channel amplifier
- (17" component style)
- Also available in a 3-rack units high 19", rack mount version (A1260R)
- 120 watts per zone, class A/B amp
- Each zone may be switched between the global input and the local input



ARIA™ 4 Input 6 Zone Matrix AV Controller

- A4603 / A4603R
- IR Remote control and RS-232 Serial Control for Touch Screens
- Pre-amp Outputs are a perfect



ARIA™ 4 Input 6 Zone Matrix & Amplifier

- A4623 / A4623R
- Built-in Amplifiers: 40 watts per zone
- Pre-amp outputs for adding more amplification
- IR and Serial Control
- Expandable to 18 zones

• ARIA™ VOLUME CONTROL



ARIA™ Multi-Source Volume Control

- A0127
- Volume Control for the A4603 and A4623 matrix products
- 4 source selection customizable buttons
- Integrated IR Repeating system



Impedance Matching Volume Control

- VC-302
- 300 watts peak, 100 watts RMS per channel
- Impedance matching up to 8 pairs of speakers



VC-302 Accessory Kit

- VC-3IV / VC-3AL
- Color kit for VC-302 impedance matching volume control
- Available in Ivory VC-3IV
- Available in Almond VC-3AL

• ARIA™ IPOD DOCKS



ARIA™ On-Wall Dock for iPod®

- P-3036
- RS-232 interface for automation systems and album art
- Keeps the iPod charged
- Allows viewing of iPod videos on a TV
- Integrated IR Control Repeating system



On-Wall Dock Station for iPad®

- A0602 White / A0604 Black
- The perfect companion for Automation Systems
- iPad is always charged and always right where you left it
- Lightning or 30 pin
- Hinged door allows the iPad Gen 2 and 3 to be removed
- 3 Gang J Box required

• ARIA™ ACCESSORIES



CAT5 Audio / IR Transmitter and Receiver

- A0304



A/V System Remote Control

- A0505

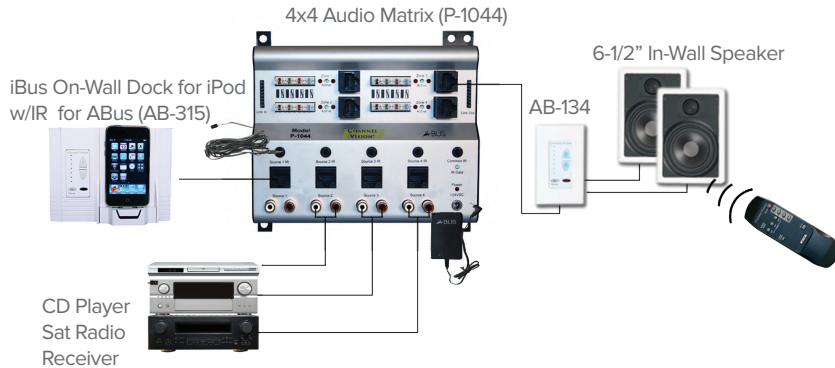
• ARIA™ AUDIO/VIDEO KITS



Six-Zone Audio Kit

- A-KIT 1 / A-KIT 2 / A-KIT 3 Includes 6 Pairs of Speakers
- 1 each: Multi-Room A/V Matrix (A4603)
- 1 each: Power Amplifier (A1260)
- 6 each: A/V Interconnects
- 4 each: IR emitter (IR-3002)
- 6 each: Keypads (A0127)
- 1 each: Remote Control
- Available in Ivory/Almond (A-KIT 1IA / A-KIT 2IA / A-KIT 3IA)

• ABUS WIRING DIAGRAM



- 4 sources input of RCA or CAT5
- 4 zones, expandable to 16
- 300ft. CAT5 wiring to each keypad amp
- Control source equipment with IR
- Ability to integrate a local source override with an iPod dock or alternative source

• ABUS AUDIO/VIDEO KITS



NEW ABUS 1 Source 4 Zone Complete Audio Kit

- AB-902 / AB-901 Includes 4 Pairs of Speakers
- 4 each: Amplified Keypad (AB-134)
- 1 each: Single Source Module (AB-203)
- 1 each: 4-Zone Distribution (AB-404) w/power
- 1 each: Remote Control (A0505)
- 2 each: Dual IR Flasher (IR-3002)
- Available in Ivory/Almond (AB-901A/AB-902IA)



NEW ABUS Single Zone Bluetooth Audio Package

- AB-907W
- Includes the AB-203, AB-303, AB-134W, IC608 speakers and an AB-T2410 power supply
- Uses CAT5 or CAT6 cabling
- IR sensor range up to 40 feet



NEW ABUS Single Zone Bluetooth Audio Package

- AB-908W
- AB-203, AB-303, AB-134W, IC603 speakers and AB-T2410 power supply
- CAT5 or CAT6 cabling



NEW ABUS Two Zone Audio Kit with Bluetooth and 2 pair In-Ceiling Speakers

- AB-909W
- AB-412, (2) AB135W, (1) AB-303, (2) pair IC608 speakers and an AB-T2410 power supply



NEW ABUS Two Zone Audio kit with Bluetooth & 2 pair In-wall Speakers

- AB-910W
- AB-412, (2) AB-135W, (1) AB-303, (2) pair IW603 speakers and an AB-T2410 power supply
- Cat5 or cat6



ABUS 4 Source 4 Zone Audio Kit

- AB-904
- 1 each: 4 Source, 4 Room ABUS Matrix (P-1044)
- 4 each: 4 Source Amplified Keypad (AB-134)
- 4 each: Single Head IR Emitter (IR-3001)
- 1 each: Remote Control (A0505)
- 1 each: Punch Down Tool (J-110 Tool)
- Available in Ivory/Almond (AB-904IA)

• ABUS VOLUME CONTROL



NEW ABUS Multi-Source Volume Control

- AB-134W
- High output class D amp design
- Remote or local push-button control
- Back-lit keypad with blue LED indicators



NEW ABUS Low Cost Volume Control

- AB-135W
- High output class D amp design
- Back-lit keypad with green LED indicators

● **A-BUS AUDIO DISTRIBUTION**



ABUS Single-Source Distribution Module

- AB-203
- Single CAT5 output for audio distribution with AB-404
- 2 IR emitter outputs for control of audio equipment



NEW ABUS 1 Input 2 Zone Audio Distribution

- AB-402
 - Local and CAT5 source input
 - 2 zones, Power and IR
- *Requires 2 gang box*



ABUS Panel Distribution Module

- AB-404
 - Accepts source from AB-203 or AB-301 and distributes to 4 zones
 - Expansion to an unlimited number of zones
- *Requires power supply AB-T2454*



ABUS 1 Input 4 Zone Audio Distribution

- P-1014
- Local and system audio inputs with selectable priority
- Expansion to an unlimited number of zones



ABUS 4 Input 4 Zone Audio Matrix

- P-1044
- Expandable to 16 zones

● **ABUS WALL DOCKS**



ABUS On-Wall Dock for iPod

- AB-315
 - Compatible with all A-BUS Audio Systems
 - Charges iPod
- *Shown with AB-134 not included*



ABUS Bluetooth Wall Dock for Apple Products

- AB-317
- Senses audio to automatically override the main audio source
- Uses cat5 cabling
- Bluetooth Streaming



ABUS On-Wall Android Docking Station for A-Bus Audio Systems

- AB-318
- Charges your Android
- Uses CAT5 Cabling
- Bluetooth Streaming
- Senses audio to automatically override the main audio source

● **ABUS ACCESSORIES**



ABUS Local Source Module

- AB-301



A/V System Remote Control

- A0505



NEW ABUS Local Source Bluetooth Module

- AB-303

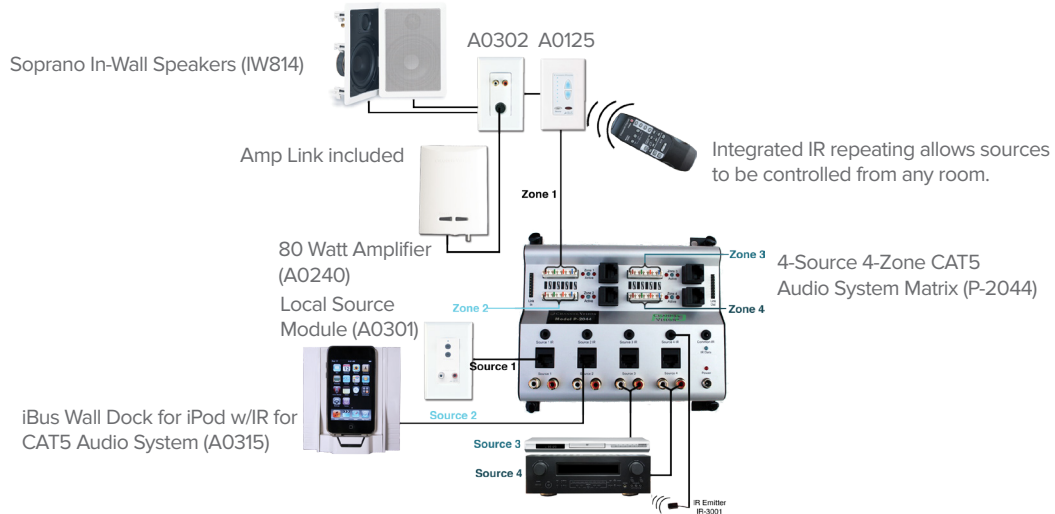


Power Supply

- AB-T2454

A-Bus (Good)	Controller	Wiring	Volume Control	Wall Docks
1 Source, 4 Zones	P-2014 1 x 4 Audio Distribution	1 Source input of RCA or CAT5	AB-314W—Multi-Source Volume Control AB-315W—Low Cost Volume Control	AB-315 On-Wall Dock for Ipod AB-318 Bluetooth Wall Dock for Android
4 Source, 4 Zones	P-2044 4 x 4 Audio Distribution	4 sources input of RCA or CAT5	AB-314W—Multi-source Volume Control AB-315W—Low Cost Volume Control	AB-315 On-Wall Dock for Ipod AB-318 Bluetooth Wall Dock for Android

● CRESCENDO™ WIRING DIAGRAM



● CRESCENDO™ AUDIO/VIDEO KITS



- CRESCENDO™ Room Kit**
■ A0910
- 1 each: 80 Watt Class D Amplifier (A0240)
 - 1 each: Speaker to Line Level Converter (A0302)
 - 1 each: CAT5 Audio System Keypad (A0125)



- CRESCENDO™ Room Kit**
■ A0912
- 4 each: 80 Watt Class D Amplifier (A0240)
 - 4 each: Speaker to Line Level Converter (A0302)
 - 4 each: CAT5 Audio System Keypad (A0125)
 - 2 each: IR emitter (IR-3002)
 - 1 each: 1-Source x 4-Zone Audio Hub (P-2014)



- CRESCENDO™ Room Kit**
■ A0914
- 1 each: 4x4 Matrix Distribution Hub
 - 4 each: 80 Watt Class D Amplifier (A0240)
 - 4 each: Speaker to Line Level Converter (A0302)
 - 4 each: CAT5 Audio System Keypad (A0125)
 - 4 each: IR emitter (IR-3001)
 - 1 each: 4-Source x 4-Zone Audio Hub (P-2044)



- CRESCENDO™ On-Wall Dock Single Room Kit**
■ A0915
- iBus Wall Dock for iPod - A0315
 - 100W Amplifier - A0350
 - Keypad Controller - A0129
 - In-Ceiling Speakers (one pair) - IC608

● CRESCENDO™ AUDIO DISTRIBUTION



- CRESCENDO™**
80w Class D Amplifier
■ A0240
- 80 Watt amplifier
 - Audio-sensing power shut-off to conserve energy



- CRESCENDO™**
Audio Subwoofer Connection
■ A0302
- Provides line-level output for re-amplification
 - Sub mode allows a subwoofer to be added to an audio system



- CRESCENDO™**
100 Watt Flush Mount Amplifier
■ A0350
- Pre-amp audio outputs for powered subwoofer
 - Local audio input
 - Power saving audio sensed circuit
 - Multi-Room amp with P-2014 or a P-2044



- CRESCENDO™**
4 Input 4 Zone Audio Matrix
■ P-2044
- Expandable to 16 zones



- CRESCENDO™**
1 Input 4 Zone Distribution
■ P-2014
- Local and system audio inputs with selectable priority
 - Expansion to an unlimited number of zones

● **CRESCENDO VOLUME CONTROL**



- CRESCENDO Volume Control**
- A0125
 - Digital volume control for P-2014 and P-2044
 - Integrated IR Repeating System



- CRESCENDO Volume Control**
- A0129
 - 1-Zone Volume Control for the A0350 in-wall amplifier
 - Integrated IR Repeating system

● **CRESCENDO Wall DOCKS**



- On-Wall Dock for iPod**
- A0315
 - Local source iPod Dock
 - Charges iPod
 - Use with A0350, P-2044 or P-2014
- *Shown with A0125 Keypad not included*



- Charges a Micro-USB**
- A0318
 - Automatic Power-Saving mode
 - Mounts in a Standard 2-gang box
 - Senses audio to automatically override the main audio sources



- On-Wall Docking Station for Android**
- A0320
 - 3.0 Bluetooth Technology
 - Senses audio to automatically override the main audio source
 - Provides a standard RCA line level audio output

● **CRESCENDO ACCESSORIES**



- CRESCENDO CAT5 Local Source Module**
- A0301

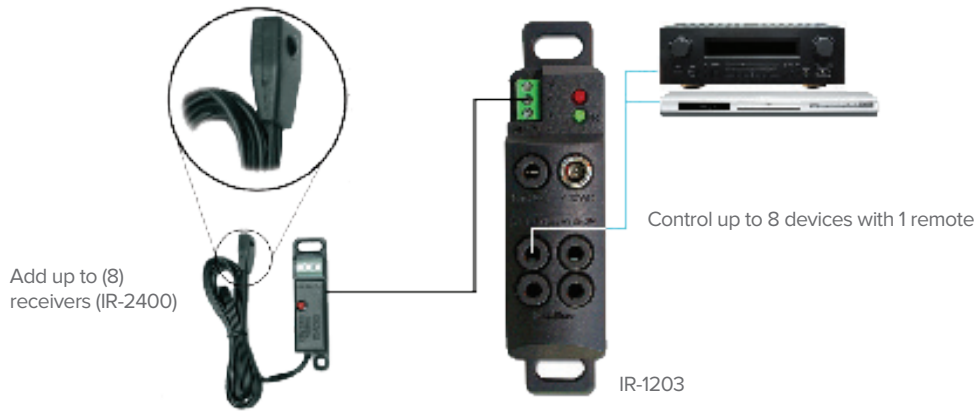


- A/V System Remote Control**
- A0505

Crescendo (Better)	Controller	Wiring	Volume Control	Wall Docks	Optional Accessories
1 Source, 4 Zones	P-2014 1 x 4 Audio Distribution	1 Source input of RCA or CAT5	A0125—Volume Control with IR Control A0129—1 Zone Volume Control for use with the A0350—in-wall amp	A0315 On-Wall Dock for Ipod A0318 Bluetooth Wall Dock for Android	A0350—Flush Mount Amplifier A0301—Local Source Module A0505—A/V System Remote Control
4 Source, 4 Zones	P-2044 4 x 4 Audio Distribution	4 sources input of RCA or CAT5	A012W—Multi-source Volume Control A0129—1 Zone Volume Control for the A0350 In-wall Amp	A0315 On-Wall Dock for Ipod A0318 Bluetooth Wall Dock for Android	A0350—Flush Mount Amplifier

- System considerations

● IR REMOTE CONTROL DIAGRAM



● IR REMOTE CONTROL KITS



- IR Repeater System All-in-One Kit**
- IR-5000
 - Easily connect the IR Repeater System All-in-One Kit - IR-5000 and control Home Theater AV devices located behind closed cabinet doors.



- IR Repeater Kit**
- IR-5010
 - Receiver can be 1000 feet from hub.**
 - 1 each: IR Receiver - IR-2400
 - 1 each: IR Hub - IR-1203
 - 2 each: Dual head IR emitter - IR-3002
 - 12 V power supply



- Compatible with Uverse, Cisco, Motorola & Scientific Atlanta**
- IR-5001
 - Status LEDs for IR signal indication
 - 3 Mounting Accessories included
 - Knob to adjust Sensitivity



- All in One IR Repeater Kit**
- IR-5011
 - Compatible with Uverse, Cisco, Motorola & Scientific Atlanta
 - Plasma Proof Receiver
 - Versatile Mounting Options

● IR REMOTE CONTROL



- IR Repeater Amplified Hub**
- IR-1203
 - 4 IR emitter outputs
 - Status LEDs for power and IR Signal indication



- IR Repeater System Receiver**
- IR-2400
 - Mini IR receiver head, desk top or bullet in 1 part
 - Plasma, sunlight, LED proof



- IR Repeater Amplified Hub**
- IR-1204
 - 4 IR Emitter Outputs
 - Knob to adjust IR sensitivity
 - Status LEDs for power and IR Signal indication



- IR Receiver Hub**
- IR-2401
 - Perfect Repeating with Uverse, Cisco, Motorola & Scientific Atlanta
 - Plasma, sunlight, LED proof
 - Versatile Mounting Options Included



IR Repeater System Emitter

■ IR-3001

- Single IR – Emitter/Flasher



IR Repeater Over Coax Engine

■ IR-4000

- Power 4 IR receivers with one power supply
 - Maximum distance to IR Repeater emitters is 500ft.
- *Use IR-4101 Only



IR Bypass Cable

■ IR-4180

- 3.5 to 3.5mm IR patch cable
- Use with audio stereo plug
- Use with IR over coax



IR Repeater Distribution Module

■ C-1201

- Combines signals from 8 IR Repeater Receivers
- Provides 1 simple output to your amplified IR repeater hub
- Mounts in Channel Vision's structured wire enclosures



IR Repeater System Dual Emitter

■ IR-3002

- Holster holds flasher in place, move equipment without re-gluing on the equipment



IR Repeater Over Coax Receiver

■ IR-4101

- Coax IR Repeater Receiver
- Compatible with: IR-4000, E2200IR, E4200IR, P-0321, and P-0328



J-Box IR Repeater Receiver

■ IR-2005

- Designed for use with single- or multi-room IR Repeater Systems (IR-2400 inside)
- Includes decorator style trim ring

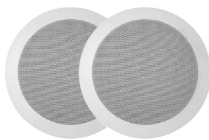


IR Breakout Insert

■ G-IRB-W

- 3.5 mm plug for IR receivers or emitters
- 3-wire terminal connection
- Great for 3.5 mm audio to CAT5 conversion

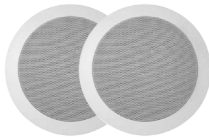
● IN-CEILING SPEAKERS - 10 YEAR WARRANTY



Builder Series 5.25" In-Ceiling Speaker

■ IC504

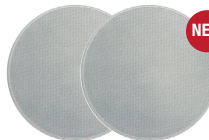
- 5.25" in-ceiling loudspeaker
- Polypropylene woofer with butyl rubber surround



Soprano Series 5.25" In-Ceiling Speaker

■ IC514

- 5.25" High Performance 100W speaker
- Kevlar woofer with 1" pivoting tweeter



NEW Soprano Series 8" In-Ceiling Speaker

■ IC815

- High Performance 8" 150 watt Speaker
- 1" Ferrofluid Cooled Silk Dome Tweeter
- Ultra-thin bezel magnetically mounted grill



NEW Soprano Series 8" Angled In-Ceiling Speaker

■ IC825

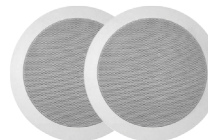
- 8" High performance speaker
- Pivoting tweeter technology with 1" voice coil
- Ultra-thin bezel magnetically mounted grill



NEW

■ ID853

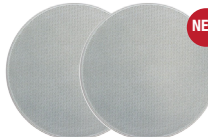
- 8" High Performance In-ceiling loudspeaker
- Kevlar woofers with butyl rubber surrounds
- Perforated, frameless grille



Builder Series 6.5" In-Ceiling Speaker

■ IC608

- 6.5" in-ceiling loudspeaker
- High compliance polymer tweeter,
- Polypropylene woofer with butyl rubber surround



NEW

Soprano Series 6.5" In-Ceiling Speaker

■ IC615

- 6.5" High Performance 120 watt Speaker
- 1" Ferrofluid Cooled Silk Dome Tweeter
- Ultra-thin bezel magnetically mounted grill



NEW

Soprano Series 6.5" Angled In-Ceiling Speaker

■ IC626

- 6.5" High performance speaker
- 15° Angled woofer
- Ultra-thin bezel magnetically mounted grill



NEW

■ ID653

- 6.5" High Performance in-ceiling loudspeaker
- Kevlar woofers with butyl rubber surrounds
- Perforated, frameless grille



Web Support

www.channelvision.com



Phone Support:

(800) 840 - 0288 or (714) 424 - 6500



Email Support:

techsupport@channelvision.com

● IN-WALL SPEAKERS



Builder Series 6.5" In-Wall Speaker

- IW603
- 1/2" Polymer Tweeter
- Small perforated designer grill
- 3.7" Depth



Soprano Series 8" In-Wall Speaker

- IW814
- 8" high performance 120 Watt
- Pivoting 1" voice coil, enclosed, rare earth neodymium magnet
- 8" Kevlar, butyl rubber surround with 24 oz. magnet



Soprano Series 6.5" In-Wall Speaker

- IW615
- Pivoting 1" tweeter
- 6.5" butyl rubber surround with 20 oz. magnet
- Ultra-thin bezel magnetically mounted grill



Soprano Series 6.5" LCR In-Wall Speaker

- LCR625
- Dual 6.5" Mica filled polypropylene with Butyl rubber surround
- Pivoting 1" silk soft dome tweeter
- Home theater left, center, right

● OUTDOOR SPEAKERS



Soprano Series 5.25" Outdoor Speaker

- OS526
- Weather resistant aluminum grilles, brackets and stainless steel hardware
- UV protected cabinet resists sun fade
- 5.25" woofer with 20oz magnet
- 160 Watt



Soprano Series 6.5" Outdoor Speaker

- OS611
- Weather resistant aluminum grilles, brackets and stainless steel hardware
- UV protected cabinet resists sun fade
- 6.5" woofer with 20oz magnet
- 200 Watt



Soprano Series 8" Outdoor Speaker

- RS802-GR / RS801-SA
- 8" High Performance 160 Watt speaker
- Waterproof tweeter with 1" voice coil
- Polypropylene cone woofer with butyl rubber surround

● WIRELESS AUDIO DISTRIBUTION



Wireless Audio Transmitter

- WA-320: 1 Source to 1 Destination
- WA-321: 1 Source to Many Destinations
- Wirelessly transmits audio up to 300' ft.
- Line-level and speaker level audio inputs
- 3.8 micro second latency, undetectable to the human ear
- 2.4GHz operating frequency offers clear, undistorted audio



Wireless Receiver with Amplifier

- WA-350: 1 Destination from 1 Source
- WA-351: Many Destinations from 1 Source
- Receive wireless audio from up to 300 ft. away
- 100 Watt integrated class D amplifier
- Pre-amp audio outputs for easy connection to powered subwoofer
- Local audio input to override the wireless audio signal



Wireless Audio Receiver

- WA-360: 1 Destination from 1 Source
- WA-361: Many Destinations from 1 Source
- Wirelessly receives audio up to 300ft.
- Standard Line-level audio outputs
- 3.8 micro second latency, undetectable to the human ear
- 2.4GHz operating frequency offers clear, undistorted audio



Wireless Receiver Wall-Mount Brackets

- WA-32WM
- WA-36WM



8" In-wall subwoofer

- IWS8
- Compatible with a 50-100 Watt RHMS Amplifier



 **CHANNEL VISION™**

234 Fischer Ave. Costa Mesa, CA 92626 USA

800.840.0288 • 714.424.6500

sales@channelvision.com

www.channelvision.com

Control4 CasaTunes' pakedge device&software inc. VIDEOINSIGHT  **CRESTRON**

 **LUXUL**  **QNAP**  **Premiere savant**  **BITWISE**  **COUPE**  **EXTRA**  **NEXT LEVEL**  **RTI**
WIRELESS QNAP SYSTEMS, INC. Partner in Excellence CONTROLS AUTOMATION VEGEABLES SECURITY SYSTEMS INTEGRATION PARTNER



Channel Vision Technology, Channel Vision Central, Channel Vision PRO, ARIA, AFFINITY, Soprano, Crescendo and iBus are trademarks of Channel Vision Technology. A-BUS® is a registered trademark of LeisureTech Electronics Pty Ltd, Australia, and may be covered by one or more of the following patents US 7, 181, 023, 6, 389, 139, EP 1004222, AU 739808, NZ 502982, Mexico Z41196, Canada CA2301062. iPod is a trademark of Apple inc., registered in the U.S. and other countries. All other trademarks remain the property of their respective holders. This material is copyrighted in its entirety and no duplications or representations in any format are allowed without the prior written consent of Channel Vision Technology. Specification and part numbers are subject to change without notice. Channel Vision Technology is not responsible for errors or omissions. Copyright © 2014 Channel Vision Technology. All rights reserved.